

## S600 LINE PRODUCT BOOK



For a hundred years,  
INAX has created aesthetic ceramic tiles  
and bathroom products with one unwavering  
passion: to enable people to live well.

With an unmatched mastery in understanding  
the properties of clay and harnessing the power  
of water, we continue our pursuit of craftsmanship,  
maximizing the blessings of nature.

Building on our heritage in ceramics,  
we offer intricate tiles in various forms and hues  
that add a touch of warmth to the cityscape and  
products that enable cleanliness and comfort  
and fit esthetically within the bathroom space.

INAX reimagines the entire bathroom experience,  
creating a calming environment that embodies  
Japanese rituals of water - navigating you to a  
deeper level of relaxation and rejuvenation.

Take a moment to reflect in serenity.  
Achieve harmony of your body and mind.  
Embrace your true self and  
be energized for what lies ahead tomorrow.

LIVE WELL



**INAX 100** YEARS  
ENABLING EVERYONE TO LIVE WELL

REJUVENATE EVERYDAY  
WITH THE RITUALS OF WATER

The S600 LINE by INAX presents the ultimate combination of Japanese spatial aesthetics with modern sensibilities and innovation.

Through intelligently arranged products that look like pieces of art, subtly embedded with the spirit of Japanese hospitality, the bathroom arranged with S600 LINE products helps bring about a deeper level of relaxation and vitality. Enjoy a tranquil moment in the luxurious comfort of your S600 LINE bathroom, and rejuvenate every day with the Japanese rituals of water.



# S600 LINE DESIGN VALUES

The S600 LINE has been developed based on the INAX Brand Design Values. Essence pursues the essential values of the product. Sophistication ensures functionality as well as attractiveness when integrated with architecture.

Thoughtfulness enables a considered design that reflects the Japanese sensibility of being caring to others. Through these three perspectives, INAX offers a design value which is uniquely different from typical designs.

## ESSENCE

Using Japanese ideas and technologies to maximize limited space, INAX generates spaciousness by giving the function of a shelf to the products.

## SOPHISTICATION

Combining the square shape, representing architecture, and the oval shape, representing human beings, the squoval is a design which is easy to use and fits beautifully with architecture.

## THOUGHTFULNESS

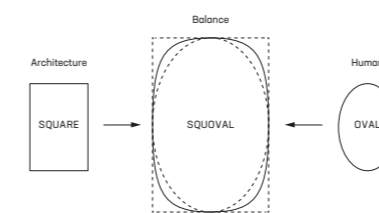
The S600 LINE pursues the sense of cleanliness rooted in Japanese culture and the ease of cleaning. In Japan, there is a strong passion for resolving social issues, and the S600 LINE incorporates universal designs cultivated in Japan that allow for intuitive use of the products regardless of the user's age or physical characteristics.



## INAX SIGNATURE ELEMENTS

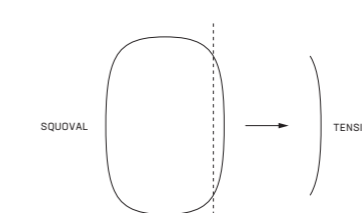
INAX signature elements illustrate the philosophies and values underlying the brand, nurtured over the years in Japan. Being INAX's design DNA, they ensure that all INAX products have a consistent look.

### SQUOVAL



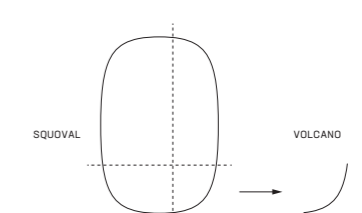
A hybrid shape created from a square and an oval, which INAX has aptly named a "Squoval." This unique hybrid geometry celebrates the friendly and human shape of the oval with the structure of the square. The combination of human and architectural elements (humaniture) helps to create a form which is both conscious of the architectural space in which it will be placed and demonstrates a sensitivity toward human interaction, connecting people and architecture.

### TENSION



Inspired by the surface tension of water, this element gently reflects light and invites interaction. This detail adds a controlled yet dynamic element to an otherwise flat surface. Like the edge of a samurai's sword, it is precise, elegant, and beautiful. The form has an embedded function and acts as a guard to water; its symmetrical incline gently repels liquid.

### VOLCANO



Flowing from one surface to the next, the volcano is a controlled organic transition, inviting interaction and intuitively guiding the user to a point of importance. The volcano is easy to clean and maintain and is robust yet elegant.

# ONE-PIECE TOILET

Intricately designed to offer a stylish and functional use of the bathroom space, the S600 LINE one-piece toilet enhances the quality of everyday life by liberating you from the burden of cleaning.

The S600 LINE one-piece toilet is all-ceramic, using INAX's proprietary AQUA CERAMIC technology, which prevents the attachment of waste and the buildup of black water marks. As the toilet bowl is rimless, it will only require a quick sweep inside the bowl to keep the toilet shiny, allowing you to spend more time on things that you enjoy. By fully eliminating seams, the toilet not only is easier to clean but also has an aesthetically attractive look from the side as well.

The tank lid is designed as a tray with a rimmed edge, which allows you to place small items without the risk of falling off. The lid is made of resin, minimizing the gap between the tray and the flush buttons to ensure easy cleaning. The skirted base dips in at the bottom, which has the effect of making the toilet look smaller and the bathroom more spacious.



# INTEGRATED TOILET SATIS G

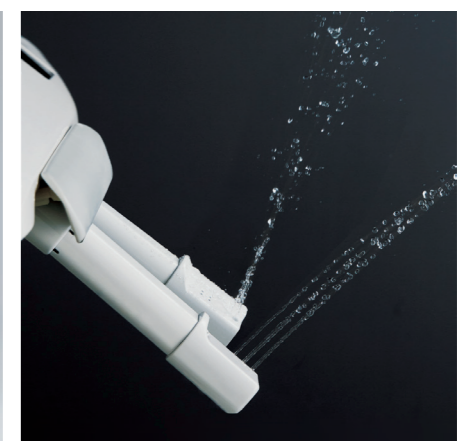
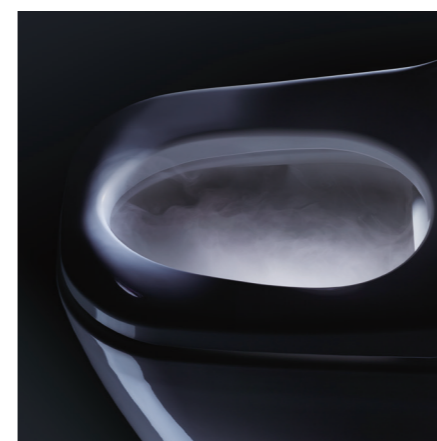
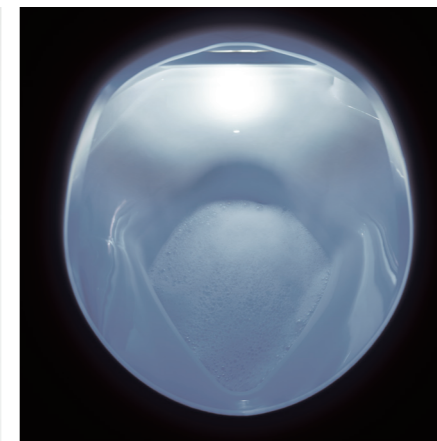
The SATIS G state-of-the-art shower toilet is built to offer true satisfaction, elevating your bathroom from just a necessity to an elegant and comfortable living space.

The INAX flagship SATIS G shower toilet comes with an array of innovations that enhance the comfort of bathrooms. In addition to the AQUA CERAMIC technology, which keeps the toilet bowl clean and shiny, the unit is full of hygienic functions. The foam cushion reduces urine splash by automatically creating a 5-15mm thick fine foam in the toilet bowl.

The air shield deodorizer powerfully removes odor by creating a curtain of air within the toilet bowl and flowing it through the existing filter, shielding the smell from getting out. Plasmacluster® is periodically released in the bathroom, thoroughly sanitizing and removing odors from the toilet bowl and its attachments. The dual nozzle structure, which separates the rear-wash and the

female bidet function, caters to women's concerns about cleaning their intimate area with the nozzle used for the rear-wash. SATIS G is also available in a smooth, matte black finish. The luxurious design is sure to transform the atmosphere of your bathroom.

\*Plasmacluster and Plasmacluster logos are registered trademarks of Sharp Corporation.



# PASSO

Concealing advanced functions in a stylish design, the PASSO shower toilet seat offers an easy and affordable way for people to live well.



The PASSO shower toilet seat comes with comfort and hygiene functions featured in the INAX flagship SATIS G, the air shield deodorizer and Plasmacluster®\*. The air shield deodorizer powerfully removes odor by creating a curtain of air within the toilet bowl and flowing the air through the existing deodorizing air filter, shielding the smell from getting out of the toilet bowl. The periodical release of Plasmacluster®\* in the

bathroom thoroughly sanitizes and removes odors from the toilet bowl and its attachments. With INAX's unique dual nozzle structure, which separates the rear-wash and the female bidet function, it also caters to women's hygiene concerns about cleaning their intimate area with the nozzle used for the rear-wash. Furthermore, the PASSO also comes with automatic opening and closing, easy cleaning, and energy-saving

functionalities and allows you to easily reimagine your bathroom just by changing the seat of your existing toilet.

\*Plasmacluster and Plasmacluster logos are registered trademarks of Sharp Corporation.

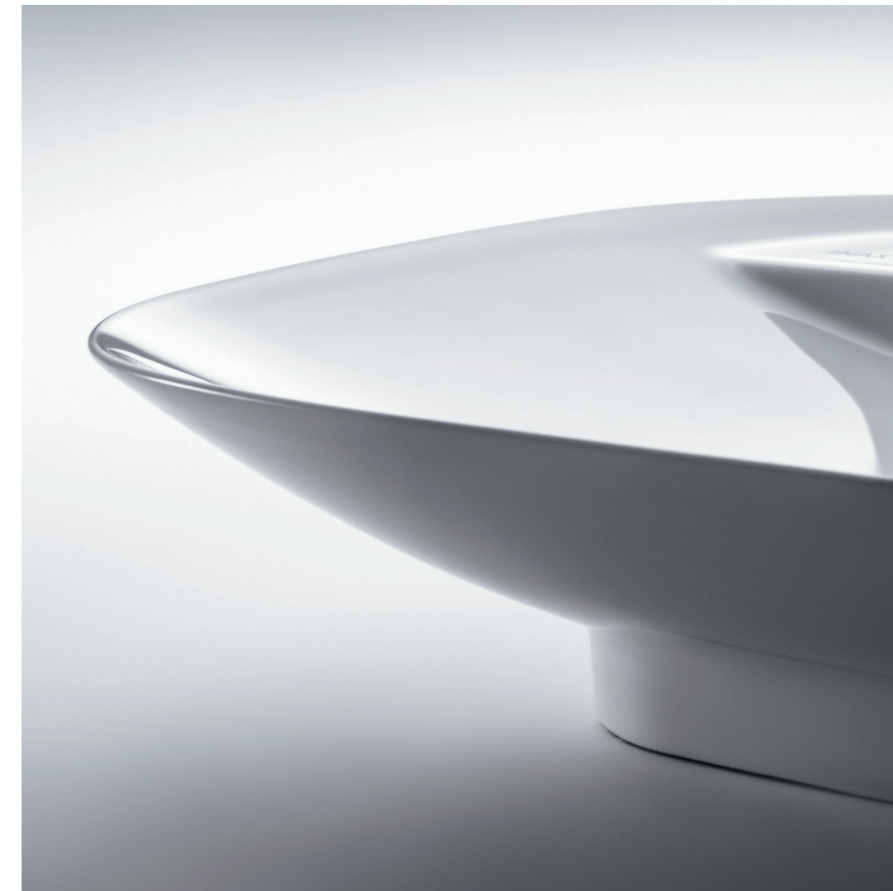


# CERAFINE™ VESSEL BASIN & MIXER

Delicately designed with super-thin edges, the beautiful CERAFINE™ VESSEL BASIN embraces a refined look and feel, embodying a uniquely Japanese spirit and sensibilities.

Inspired by the traditional Japanese sake cup, the elegant shape of the CERAFINE™ VESSEL BASIN is accentuated by the shine of the glaze. Its exquisite design makes the CERAFINE™ VESSEL BASIN an attractive object in its own right. Supporting the ultra-thin design is INAX's new clay, which maintains its strength and does not deform during firing. The CERAFINE™ VESSEL BASIN is also easy to clean and maintain,

as it is made with AQUA CERAMIC technology that prevents dirt from attaching to the surface. The basin mixer has a holed lever which is easy to handle by just the tip of your finger, and the INAX Blue color appears when you raise the lever, ensuring an intuitive user experience.



# INTELLIGENT CONTROL SHOWER SYSTEM



With a large overhead shower that runs two patterns of water flow, the S600 LINE intelligent control shower system is sure to give you the perfect showering experience, whether you are in the mood for quick freshening up or relaxing meditation.

A thoughtful and functional Japanese design that maximizes space utilization even in smaller bathrooms, the S600 LINE intelligent control shower system combines a tray with the faucet, which serves as a shelf for you to place shampoo and other critical items you need to enjoy your shower. The tray is designed with a slightly rimmed edge to prevent things from falling off and a slit at the back to efficiently drain pooled water.



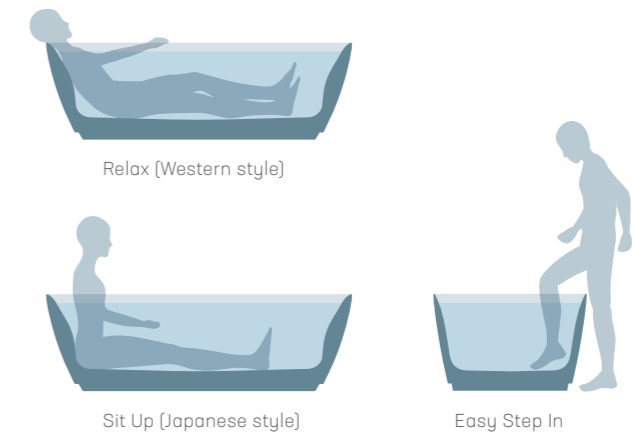
The innovative intelligent control technology lets you easily switch the shower on and off with just a push of the button and control the water volume by turning the dial. The INAX Blue color appears when you push the button, intuitively informing you which function is currently switched on.

The large squoval showerhead offers luxurious spray and cascade showers, which will give you a new and different experience. Cascade pattern provides you with a long, narrow, strong water pressure, creating the feeling of being refreshed by meditating under a waterfall. The hand shower provides large droplets that contain air, ensuring a comfortable shower experience while conserving water.

# FREESTANDING BATHTUB & SHOWER MIXER

The luxurious presence of the S600 LINE freestanding bathtub makes your bathroom a special place to relax and unwind in your everyday life.

The S600 LINE freestanding bathtub has a low silhouette compared to standard bathtubs on the market, making it easier to safely step in and out of even for smaller sized people and children. It is designed so that you can lie in and relax in the western way or sit up with your legs stretched in the Japanese style, whichever you prefer.



The faucet is designed as a tray on which you can place an aromatic candle or a bottle of bath salts, inviting you to spend a nice, long, relaxing time in the bathtub.

The hand shower provides large droplets that contain air, ensuring a comfortable showering experience while conserving water. The simple but sophisticated floating design, together with the form of the apron, which dips in at the bottom makes the bathroom feel spacious and luxurious.

# TILE MODULE ACCESSORIES

S-LINE's Tile Module Accessories enable a stylish Japanese grid-based spatial design, bringing harmony to your bathroom. Functional while fitting in naturally with the surrounding, they are sure to add comfort to your everyday life.

A perfect match to tiled walls, the S-LINE Tile Module Accessories are designed to keep your bathroom stylish and functional, with the shelves, towel hangers, and other pieces all structured to be mounted on tile joint intersections. The 300mm-module is based on Shaku, the traditional dimensional unit used in Japanese architecture, linked to the measurement of the Japanese body. Shaku unites the spatial balance of the architecture, fixtures, and human scale.

Inspired by the grid patterns found in traditional Japanese architecture, such as shoji screens and tatami mats, the S-LINE Tile Module Accessories help create a spatial design with distinct Japanese taste. Enjoy the comfort of a fully coordinated bathroom and the feeling of being at a Japanese Onsen, with accessories featuring the INAX Signature Elements.



## S600 LINE PRODUCT OVERVIEW



### ONE-PIECE TOILET

W 362 / D 740 / H 655 mm

- AQUA CERAMIC prevents dirt from sticking
- Rimless design realizes one-sweep cleaning inside the bowl
- Skirted base is easy to clean
- Water-saving dual flushing system, 4.5L / 3.0L
- Powerful vortex flush
- Unique tank lid designed to be used as tray
- Soft close seat and seat cover



### WALL HUNG TOILET

W 362 / D 550 / H 291 mm

- AQUA CERAMIC prevents dirt from sticking
- Rimless design realizes one-sweep inside the bowl
- Sleek and simple overall design is easy to clean
- Water-saving dual flushing system, 4.5L / 3.0L
- Powerful vortex flush
- Soft close seat and seat cover



### FACE PLATE

W 258 / H 172 mm

- Twin-button design, water saving
- Simple and purely chromed face, harmonized with collection design



### CERAFINE™ VESSEL BASIN

W 560 / D 400 / H 100 mm

- The CERAFINE™ VESSEL BASIN realizes an ultra-thin and elegant design
- AQUA CERAMIC prevents dirt from sticking



### CERAFINE™ VESSEL BASIN WITH DECK

W700 / D 500 / H 100 mm

- The CERAFINE™ VESSEL BASIN realizes an ultra-thin and elegant design while also being strong
- AQUA CERAMIC prevents dirt from sticking



### VESSEL BASIN

W 650 / D 460 / H 100 mm

- AQUA CERAMIC prevents dirt from sticking



### SHOWER TOILET / SATIS G

W 375 / D 705 / H 540 mm

- Foam cushion prevents urine splash
- The build-in electronic pump helps generate a powerful flush, even when water pressure is low
- Air shield deodorizer prevents leakage of smell
- Seamless seat eliminates the side gap of the seat, making it easy to clean
- Plasmacluster® kills bacteria across the entire surface of the bowl
- AQUA CERAMIC prevents dirt from sticking
- Dual nozzle features two nozzles one for the rear-wash and the other for female bidet
- Night light
- Automatic open / close



### SHOWER TOILET / SATIS G / BLACK

W 375 / D 705 / H 540 mm



### SHOWER TOILET SEAT / PASSO

W 413 / D 541 / H 104 mm

- Air shield deodorizer prevents leakage of smells
- Seamless seat makes it easy to clean
- Plasmacluster. kills bacteria across the entire surface of the bowl (only for EA24)
- Dual nozzle features two nozzles one for the rear-wash and the other for female bidet
- The nozzles automatically self-clean with silver ion water before and after use (only for EA24)
- Before-use spraying function prevents waste from sticking (only for EA24)
- Night light (only for EA24)
- Automatic open / close (only for EA24)



### BASIN MIXER

W 52 / D 166 / H 155 mm

- Handling with smooth and effortless precision and ease of use
- Hidden outlet makes appearance sophisticated
- Holed lever contributes to easy handling
- Eco Care with aerator, water saving



### BASIN MIXER EXTENDED TYPE

W 52 / D 200 / H 273 mm

- Handling with smooth and effortless precision and ease of use
- Hidden outlet makes appearance sophisticated
- Holed lever contributes to easy handling
- Eco Care with aerator, water saving



**INTELLIGENT CONTROL  
SHOWER SYSTEM**

W 450 / D 575 / H 1176 mm

- Push control allows ease of control and contributes to water and energy saving
- Top of the body can be used as a tray and a drainage slope prevents water from pooling
- Large overhead shower embraces your body
- Cascade pattern brings a meditating experience
- Water saving hand shower



**FREESTANDING BATH &  
SHOWER MIXER**

W 273 / D 395 / H 860 mm

- Simple but sophisticated design brings a luxurious taste
- Top of the body can be used as a tray
- Water saving hand shower



**FREESTANDING BATHTUB**

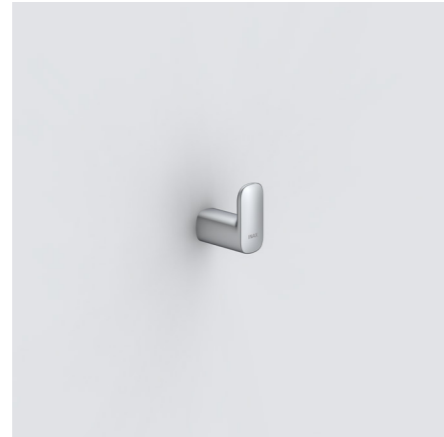
W 1700 / D 900 / H 550 mm

- Simple design with a sophisticated seamless curve brings a luxurious presence
- Organic and comfortable curve inside and outside the bathtub
- Anti-slipping bottom surface

## ACCESSORIES



**PAPER HOLDER**  
W 200 / D 83 / H 30 mm



**ROBE HOOK**  
W 60 / D 30 / H 63.6 mm



**TOWEL RING**  
W 180 / D 85 / H 189 mm



**TOWEL BAR**  
W 630 / D 90 / H 30 mm



**DOUBLE TOWEL BAR**  
W 630 / D 140 / H 30 mm



**TOWEL SHELF**  
W 630 / D 240 / H 133 mm



**SOAP DISH**  
W 112 / D 118 / H 43 mm



**CUP HOLDER**  
W 68.5 / D 96.6 / H 97.2 mm



**TOILET BRUSH**  
W 96 / D 126.3 / H 375 mm



**WALL SHELF W300**  
W 370 / D 101.2 / H 37 mm



**WALL SHELF W600**  
W 650 / D 101.2 / H 37 mm



INAX.COM

Version 7.0 | 2024.03.25



100 years website